

Power distribution and  
control solutions

CROUSE-HINDS  
SERIES

# CEAG GHG25

## Safety Switch and Switch Disconnect



**EATON**

*Powering Business Worldwide*

# Introducing CEAG GHG25 Safety Switch and Switch Disconnecter

Eaton's Crouse-Hinds series CEAG GHG25 safety switch and switch disconnecter are designed to provide safe and reliable performance in a wide range of harsh and hazardous area applications within oil and gas, petrochemical, chemical and other heavy industries.

The new series of GHG25 safety switches and switch disconnectors brings higher switching and isolation capacities, improved safety features and modular set-up delivering more protection for your personnel and operations in Ex environments.

The GHG25 safety switches and switch disconnectors feature full AC-3 motor switching capacities and isolating properties, an installation-friendly design, and easily accessible connection terminals. Available in fibreglass-reinforced polyester and stainless steel enclosures, our GHG25 portfolio provides excellent corrosion resistance, impact strength, and IP66 protection.



## Look to Eaton for all your harsh and hazardous area switches

Eaton's Crouse-Hinds series portfolio features a broad range of switches for global harsh, hazardous, and industrial environments. Available in a variety of high-quality materials, along with a wide range of sizes, certifications and design options, Eaton can deliver a switch solution that meets your specific application requirements.



**CEAG GHG26**

For Zone 1 & 2 gas applications



**CEAG GHG981**

For Zone 22 dust applications



**CEAG GHG981**

For industrial applications



**EID Disconnect switch**

For Class I, Division 1 & 2  
and Zone 1 & 2  
hazardous applications

To browse our full portfolio of switches, please visit [eaton.com/switches](https://eaton.com/switches)



## CEAG GHG25 safety switches and switch disconnectors

# Design features:

### Improved safety:

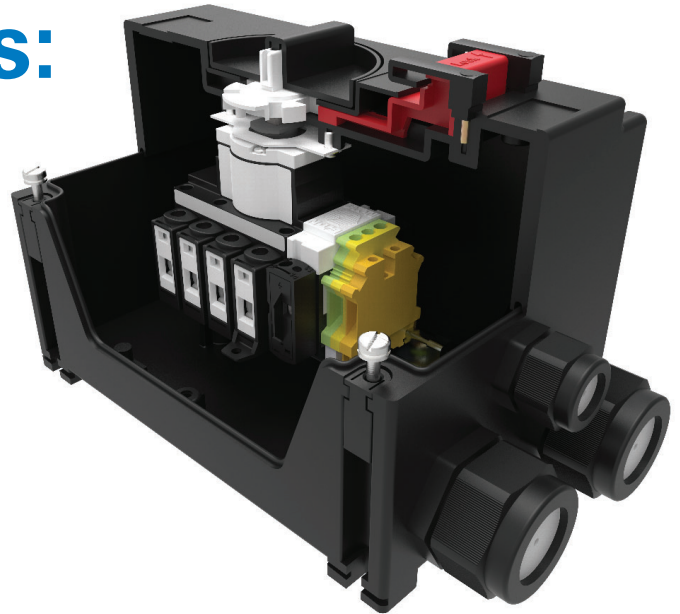
- Ensure safe operations of electrical devices during maintenance, cleaning and repair work
- Lockable in "OFF" position with three padlocks
- AC-3 and DC-23 switching capacity for isolating the electrical power supply of devices and other electrically operated equipment during maintenance, cleaning and repair work
- IEC/EN 62626-1 Class 1 compliant. Interlocked design prevents cover from being opened during maintenance

### Rugged design that's built to last in harsh and hazardous areas:

- Certified as factory assembled to ATEX and IECEX standards
- Operating temperature range of -55°C to +55°C for Gas Group IIC
- Cover threads can be easily removed and replaced if damaged. No need to replace the entire switch

### Installation-friendly design:

- Easily accessible connection terminals due to lower side walls on enclosure
- Optional mounting plate for simplified installation to wall, pipe or trellis
- Mounting plate and canopy simply clip on to switch - no tools required



### Excellent resistance to environmental challenges:

- High impact and corrosion resistant fibreglass-reinforced polyester or stainless-steel enclosures
- High degree of protection IP66
- Optional canopy provides additional protection from rain and sun exposure



Mounting plates

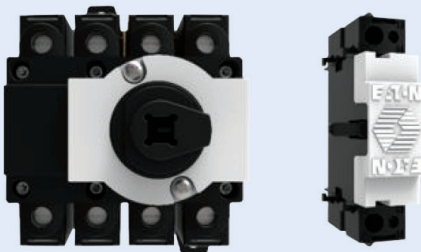


Protective canopy

## Our GHG25's advanced switchblock improves safety and performance

### Approved to the latest International standards:

- Certified as a component to ATEX and IECEX standards

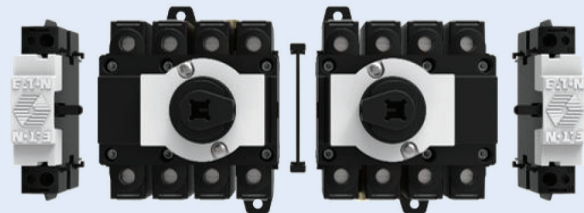


### Engineered for safety:

- Higher isolation and motor switching capacities (AC-3 and DC 23)
- Auxiliary contacts close after the main contacts close and open before main contacts open
- Finger-safe IP20 devices and accessories

### Simplified installation:

- Retrofittable auxiliary contacts can be easily installed in the field
- Switchblock modularity allows for easy extension to a 6-pole and 8-pole design
- Rail mounting



### Flexible termination:

- Terminals with max 16 mm<sup>2</sup> wire cross section connection offers wide usage possibilities

# CEAG GHG25 safety switches and switch disconnectors

## Applications:

- Provides motor control and disconnect protection for Zone 1, 2, 21 and 22 hazardous areas
- Isolates the power supply on electrical installations and apparatus during maintenance, cleaning and repair work
- Can be protected against inadvertent switching on by our integrated locking design with up to three padlocks in the OFF position
- High isolating and switching capacities for safer operations
- Designed for high-reliability in industrial areas: chemical plants, paint manufacturing plants and oil and gas refineries

## Standards:

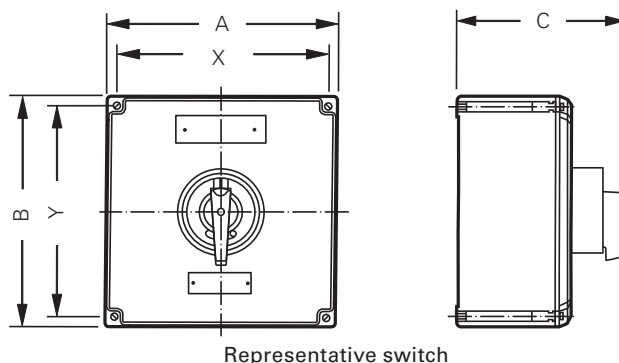
- IEC 60079-0 / EN IEC 60079-0 general requirements
- IEC 60079-1 / EN IEC 60079-1 flameproof requirements "d"
- IEC 60079-7 / EN IEC 60079-7 increased safety requirements "e"
- IEC 60079-31 / EN 60079 protection by enclosure "t"

## Certificates and markings:

- BVS 20 ATEX E 094 X; IECEx BVS 20.0076 X
- ATEX marking:  
II 2G Ex db eb IIC/IIB T6/T5/T4 Gb  
II 2D Ex tb IIIC T80 °C Db
- IECEx marking:  
Ex db eb IIC/IIB T6/T5/T4 Gb  
Ex tb IIIC T80 °C Db

## Dimensions and weights:

Enclosure type	A (mm)	B (mm)	C (mm)	X (mm)	Y (mm)	Weight (kg)
GRP Size 1	110	170	129	96	150	1.54
GRP Size 2	140	225	156	123 - 126	197	2.00
GRP Size 3	271	271	200	247	247	3.15
Stainless Steel Size 2	175	392.5	216	109.5	362.5	4.55
Stainless Steel Size 3	312.5	392.5	216	247	362.5	6.44



Representative switch



## Standard materials and finishes:

- Enclosure – GRP black (Glass-Fibre Reinforced Polyester) or Stainless Steel (AISI 316L)
- Gasket – Silicone, foamed
- Lid screws – M4 / M6 captive screws (304 stainless steel)
- Mounting plates and protective canopies - Glass-Fibre Reinforced Polyester

## Technical specifications:

- Ambient temperature range: -55°C up to +55°C
- 30,000 switching cycles electrical and mechanical lifetime
- Connecting terminals:  
Main contact: 1 x 2.5 - 16 mm<sup>2</sup>, 2 x 1.5 - 10 mm<sup>2</sup>  
Auxiliary contact 1NO: 1 x 0.5 - 2.5 mm<sup>2</sup> (pin cable lug),  
1 x 2.5 - 16 mm<sup>2</sup>  
Auxiliary contact: 1 x 0.5 - 2.5 mm<sup>2</sup>, 2 x 0.5 - 1.5 mm<sup>2</sup>
- Environmental degree of protection: IP66
- High impact resistance: IK 09
- Enclosure mounting – 4 holes for M4 to M6 screws
- Retrofittable auxiliary contacts

## Electrical ratings:

- Rated operating voltage (Ue): 690V - 50/60Hz; 60/120V DC
- Rated operating current (Ie): max 32A
- Back-up fuse 50A gG short circuit current limitation
- Isolating functions (IEC/EN 60947-3), AC-3, DC-23 switching capacity

# CEAG GHG25 safety switches and switch disconnectors

## Ordering details - Switch Disconnector:




Enclosure type	Cross section	Load		Auxiliary contact 1No <sup>2</sup>	Enclosure material			Cable entries	Order No.	
		20A	25 A		32 A	GRP	GRP + internal earth plate + stud			Stainless Steel + ext. earth stud
Switch-disconnector 3-pole										
Size 1	2.5 mm²	X			X	X		2x M32, 1x M25	GHG2521311R0303	
Size 1	4.0 mm²	X	X	X	X	X				
Size 2	6.0 mm²	X	X	X	X	X		2x M32, 1x M25	GHG2521312R0303	
Size 3	10.0 mm²	X	X	X	X	X		2x M40, 1x M25	GHG2521313R0309	
Size 3	16.0 mm²	X	X	X	X	X				
Size 1	2.5 mm²	X			X	X		2x M25, 1x M20	GHG2521311R0322	
Size 1	4.0 mm²	X	X	X	X	X				
Size 2	6.0 mm²	X	X	X	X	X		2x M25, 1x M20	GHG2521312R0322	
Size 3	10.0 mm²	X	X	X	X	X		2x M32, 1x M20	GHG2521313R0328	
Size 3	16.0 mm²	X	X	X	X	X				
Size 2	2.5 mm²	X	X		X		X	2x M25, 1x M20	GHG2521322R0341	
Size 2	4.0 mm²	X	X	X	X		X			
Size 2	6.0 mm²	X	X	X	X		X			
Size 3	10.0 mm²	X	X	X	X		X	2x M32, 1x M20	GHG2521323R0345	
Size 3	16.0 mm²	X	X	X	X		X			
Switch-disconnector 4-pole										
Size 1	2.5 mm²	X				X		2x M32, 1x M25	GHG2521411R0003	
Size 1	4.0 mm²	X	X	X		X				
Size 2	6.0 mm²	X	X	X		X		2x M32, 1x M25	GHG2521412R0003	
Size 3	10.0 mm²	X	X	X		X		2x M40, 1x M25	GHG2521413R0009	
Size 3	16.0 mm²	X	X	X		X				
Size 1	2.5 mm²	X				X		2x M25, 1x M20	GHG2521411R0022	
Size 1	4.0 mm²	X	X	X		X				
Size 2	6.0 mm²	X	X	X		X		2x M25, 1x M20	GHG2521412R0022	
Size 3	10.0 mm²	X	X	X		X		2x M32, 1x M20	GHG2521413R0028	
Size 3	16.0 mm²	X	X	X		X				
Size 2	2.5 mm²	X	X				X	2x M25, 1x M20	GHG2521422R0041	
Size 2	4.0 mm²	X	X	X			X			
Size 2	6.0 mm²	X	X	X			X			
Size 3	10.0 mm²	X	X	X			X	2x M32, 1x M20	GHG2521423R0045	
Size 3	16.0 mm²	X	X	X			X			

<sup>2</sup> Auxiliary contact in main switch as NO

# CEAG GHG25 safety switches and switch disconnectors

## Ordering details - Switch Disconnector:




		Enclosure material								
Enclosure type	Cross section	Load			Auxiliary contact 1No <sup>2</sup>	GRP	GRP + internal earth plate + stud	Stainless Steel + ext. earth stud	Cable entries	Order No.
		20A	25 A	32 A						
Switch-disconnector 6-pole										
Size 3	2.5 mm²	X	X			X			4x M32, 1x M25	GHG2521613R0002
Size 3	4.0 mm²	X	X	X		X				
Size 3	6.0 mm²	X	X	X		X				
Size 3	10.0 mm²	X	X	X		X				
Size 3	16.0 mm²	X	X	X		X				
Size 3	2.5 mm²	X	X				X		4x M25, 1x M20	GHG2521613R0022
Size 3	4.0 mm²	X	X	X			X			
Size 3	6.0 mm²	X	X	X			X			
Size 3	10.0 mm²	X	X	X			X			
Size 3	16.0 mm²	X	X	X			X			
Size 3	2.5 mm²	X	X					X	4x M25, 1x M20	GHG2521623R0041
Size 3	4.0 mm²	X	X	X				X		
Size 3	6.0 mm²	X	X	X				X		
Size 3	10.0 mm²	X	X	X				X		
Size 3	16.0 mm²	X	X	X				X		
Size 3	2.5 mm²	X	X		X	X			4x M32, 1x M25	GHG2521613R0302
Size 3	4.0 mm²	X	X	X	X	X				
Size 3	6.0 mm²	X	X	X	X	X				
Size 3	10.0 mm²	X	X	X	X	X				
Size 3	16.0 mm²	X	X	X	X	X				
Size 3	2.5 mm²	X	X		X		X		4x M25, 1x M20	GHG2521613R0322
Size 3	4.0 mm²	X	X	X	X		X			
Size 3	6.0 mm²	X	X	X	X		X			
Size 3	10.0 mm²	X	X	X	X		X			
Size 3	16.0 mm²	X	X	X	X		X			
Size 3	2.5 mm²	X	X		X			X	4x M25, 1x M20	GHG2521623R0341
Size 3	4.0 mm²	X	X	X	X			X		
Size 3	6.0 mm²	X	X	X	X			X		
Size 3	10.0 mm²	X	X	X	X			X		
Size 3	16.0 mm²	X	X	X	X			X		

<sup>2</sup> Auxiliary contact in main switch as NO

# CEAG GHG25 safety switches and switch disconnectors

## Ordering details - Safety Switches:



		Enclosure material								
Enclosure type	Cross section	Load			Auxiliary contact 1No <sup>2</sup>	GRP	GRP + internal earth plate + stud	Stainless Steel + ext. earth stud	Cable entries	Order No.
		20A	25 A	32 A						
Safety switch 3-pole										
Size 1	2.5 mm²	X			X	X			2x M32, 1x M25	GHG2522311R0303
Size 1	4.0 mm²	X	X	X	X	X				
Size 2	6.0 mm²	X	X	X	X	X			2x M32, 1x M25	GHG2522312R0303
Size 3	10.0 mm²	X	X	X	X	X			2x M40, 1x M25	GHG2522313R0309
Size 3	16.0 mm²	X	X	X	X	X				
Size 1	2.5 mm²	X			X		X		2x M25, 1x M20	GHG2522311R0322
Size 1	4.0 mm²	X	X	X	X		X			
Size 2	6.0 mm²	X	X	X	X		X		2x M25, 1x M20	GHG2522312R0322
Size 3	10.0 mm²	X	X	X	X		X		2x M32, 1x M20	GHG2522313R0328
Size 3	16.0 mm²	X	X	X	X		X			
Size 2	2.5 mm²	X	X		X			X	2x M25, 1x M20	GHG2522322R0341
Size 2	4.0 mm²	X	X	X	X			X		
Size 2	6.0 mm²	X	X	X	X			X		
Size 3	10.0 mm²	X	X	X	X			X	2x M32, 1x M20	GHG2522323R0345
Size 3	16.0 mm²	X	X	X	X			X		
EMERGENCY STOP 3-pole										
Size 1	2.5 mm²	X			X	X			2x M32, 1x M25	GHG2524311R0303
Size 1	4.0 mm²	X	X	X	X	X				
Size 2	6.0 mm²	X	X	X	X	X			2x M32, 1x M25	GHG2524312R0303
Size 3	10.0 mm²	X	X	X	X	X			2x M40, 1x M25	GHG2524313R0309
Size 3	16.0 mm²	X	X	X	X	X				
Size 1	2.5 mm²	X			X		X		2x M25, 1x M20	GHG2524311R0322
Size 1	4.0 mm²	X	X	X	X		X			
Size 2	6.0 mm²	X	X	X	X		X		2x M25, 1x M20	GHG2524312R0322
Size 3	10.0 mm²	X	X	X	X		X		2x M32, 1x M20	GHG2524313R0328
Size 3	16.0 mm²	X	X	X	X		X			
Size 2	2.5 mm²	X	X		X			X	2x M25, 1x M20	GHG2524322R0341
Size 2	4.0 mm²	X	X	X	X			X		
Size 2	6.0 mm²	X	X	X	X			X		
Size 3	10.0 mm²	X	X	X	X			X	2x M32, 1x M20	GHG2524323R0345
Size 3	16.0 mm²	X	X	X	X			X		

<sup>2</sup> Auxiliary contact in main switch as NO

# CEAG GHG25 safety switches and switch disconnectors

## Ordering details - Safety Switches:

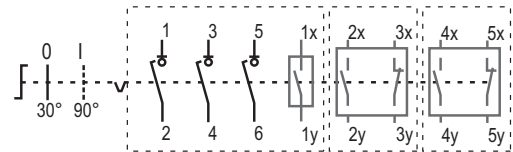


		Enclosure material								
Enclosure type	Cross section	Load			Auxiliary contact 1No <sup>2</sup>	GRP	GRP + internal earth plate + stud	Stainless Steel + ext. earth stud	Cable entries	Order No.
		20A	25 A	32 A						
EMERGENCY STOP 6-pole										
Size 3	2.5 mm²	X	X		X	X			4x M32, 1x M25	GHG2522613R0302
Size 3	4.0 mm²	X	X	X	X	X				
Size 3	6.0 mm²	X	X	X	X	X				
Size 3	10.0 mm²	X	X	X	X	X				
Size 3	16.0 mm²	X	X	X	X	X				
Size 3	2.5 mm²	X	X		X		X		4x M25, 1x M20	GHG2522613R0322
Size 3	4.0 mm²	X	X	X	X		X			
Size 3	6.0 mm²	X	X	X	X		X			
Size 3	10.0 mm²	X	X	X	X		X			
Size 3	16.0 mm²	X	X	X	X		X			
Size 3	2.5 mm²	X	X		X			X	4x M25, 1x M20	GHG2522623R0341
Size 3	4.0 mm²	X	X	X	X			X		
Size 3	6.0 mm²	X	X	X	X			X		
Size 3	10.0 mm²	X	X	X	X			X		
Size 3	16.0 mm²	X	X	X	X			X		

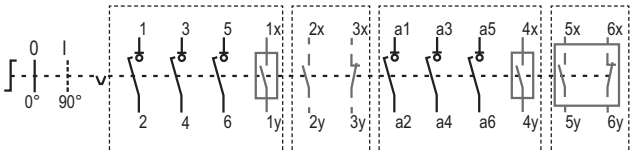
## Ordering details: Accessories:

Type	Description	Order No.
Auxiliary switches, coupling set and pin cable lugs		
Ex - d Aux switch	1 NC	GHG2593251R0001
Ex - d Aux switch	1 NO	GHG2593241R0001
Ex - d Aux switch	1 NO + 1 NC	GHG2593211R0001
Ex-i Upgrading kit		GHG2501903R0001
Coupling set for 2x switch blocks		GHG2501901R0001
Set of pin cable lugs for Aux	(2x 0.5 - 1mm <sup>2</sup> , 2x 1.5 - 2.5mm <sup>2</sup> )	GHG2501904R0001
Set of pin cable lugs for Aux	(10x 0.5 - 1mm <sup>2</sup> , 10x 1.5 - 2.5mm <sup>2</sup> )	GHG2501904R0002

### Circuit diagrams



3pol. Main Switch c/w aux NO / optional aux / optional aux



3pol. Main Switch c/w aux NO / optional aux/ 3pol.  
Main Switch c/w aux NO / optional aux



# CEAG GHG25 safety switches and switch disconnectors

## Ordering details: Accessories:

Type	Fixing method	Order No.
<b>Mounting plate for Size 1 safety switches and switch disconnectors</b>		
Wall mounting	snap on	GHG6101953R0104
Pipe clamp	snap on	GHG6101953R0105
Trellis-work mounting	snap on	GHG6101953R0106
<b>Mounting plate for Size 2 safety switches and switch disconnectors</b>		
Wall mounting	snap on	GHG6101953R0118
Pipe clamp	snap on	GHG6101953R0110
Trellis-work mounting	snap on	GHG6101953R0118
<b>Mounting plate for Size 3 safety switches and switch disconnectors</b>		
Pipe clamp (2X)	screw-on	GHG6101953R0110



Mounting plate

Type	OU	Order No.
<b>Mounting plate accessories</b>		
Label holder with type label (blank) for mounting plate size 2 and 3	10	GHG6101953R0057
Mounting hardware for pipes 1" (Ø 27 - 30 mm) for pipe clamp mounting plates	10	GHG6101953R0020

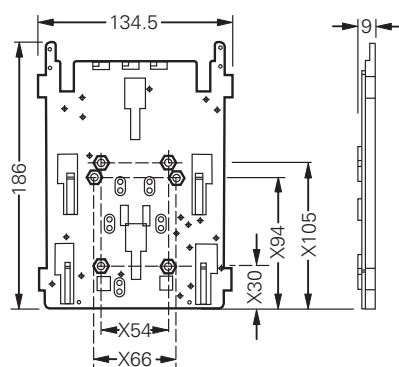


Protective canopy  
(Requires mounting plate for installation)

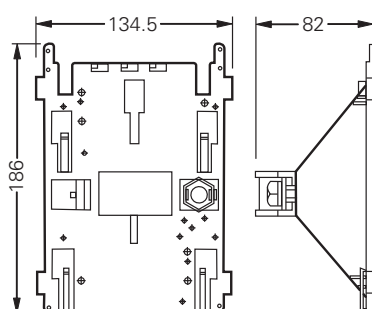
Type	Application notes	Order No.
<b>Protective canopy - requires mounting plate for installation</b>		
Canopy for size 1 safety switches and switch disconnectors		GHG6101955R0102
Canopy for size 2 safety switches and switch disconnectors	installs on pipe clamp mounting plates only	GHG6101955R0104
Canopy for size 3 safety switches and switch disconnectors		GHG6101955R0106

## Dimensions: Mounting plates and canopies

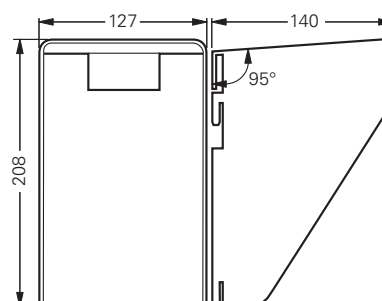
### For size 1 safety switches and switch disconnectors



Mounting plate for wall/trellis mounting



Mounting plate for pipe mounting

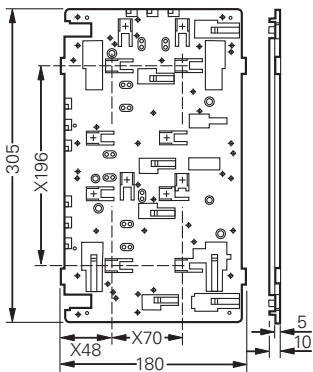


Protective canopy for wall, trellis  
and pipe clamp mounting plates

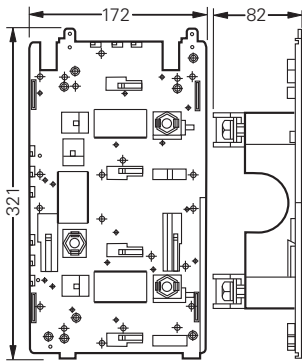
# CEAG GHG25 safety switches and switch disconnectors

## Dimensions: Mounting plates and canopies

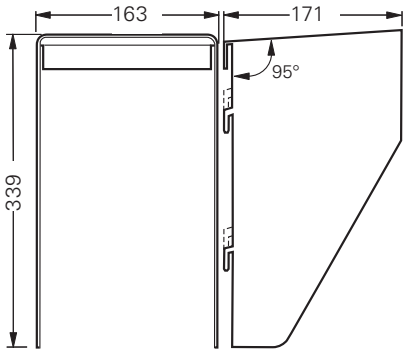
For size 2 safety switches and switch disconnectors



Mounting plate for wall/trellis mounting

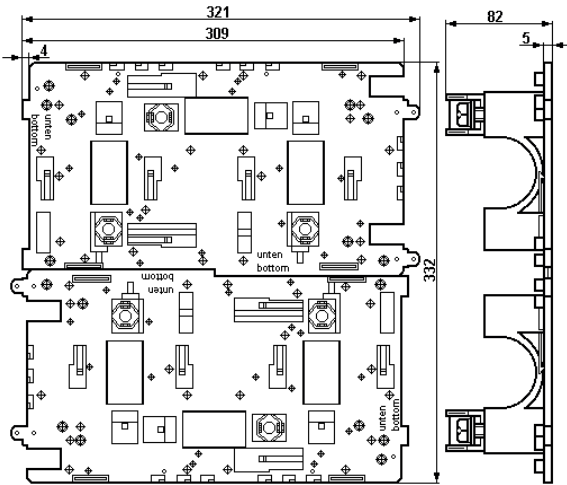


Mounting plate for pipe clamp mounting

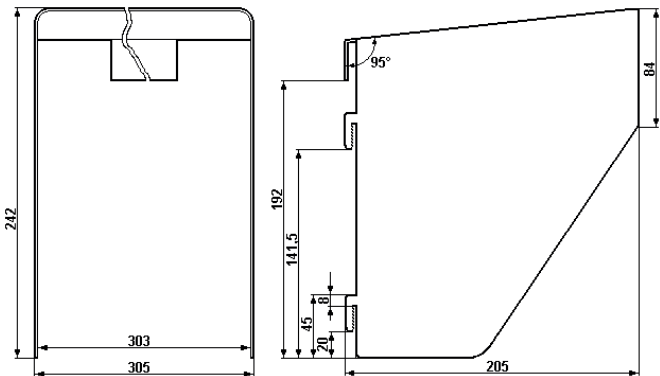


Protective canopy for pipe clamp mounting plates

For size 3 safety switches and switch disconnectors



Mounting plate for pipe clamp mounting  
(2 plates installed horizontally)



Protective canopy for pipe mounting plates

## CEAG GHG25 safety switches and switch disconnectors

### Notes

Eaton's Crouse-Hinds, B-Line and Oil & Gas Division

# The safety you rely on.

See the complete offering of hazardous and industrial products at [www.eaton.com](http://www.eaton.com)

## U.S. (Global Headquarters): Eaton's Crouse-Hinds Business

1201 Wolf Street  
Syracuse, NY 13208

(866) 764-5454  
FAX: (315) 477-5179  
FAX Orders Only:  
(866) 653-0640

[CrouseCustomerCTR@Eaton.com](mailto:CrouseCustomerCTR@Eaton.com)

### For more information:

If further assistance is required, please contact an authorized Eaton Distributor, Sales Office, or Customer Service Department.

## Australia

Phone +61-2-8787-2777  
Fax +61-2-9609-2342  
[crousehindsanz@eaton.com](mailto:crousehindsanz@eaton.com)

## China

Phone +86-21-2899-3600  
Fax +86-21-2899-4055  
[ECHsales@eaton.com](mailto:ECHsales@eaton.com)

## Great Britain

Phone +44-247-630-89 30  
Fax +44-247-630-10 27  
[sales5@eaton.com](mailto:sales5@eaton.com)

## India

Phone +91-124-4683888  
Fax +91-124-4683899  
[cchindia@eaton.com](mailto:cchindia@eaton.com)

## Canada

Toll Free +1-800-265-0502  
Fax +1-800-263-9504  
Fax orders only:  
+1-866-653-0645

## Korea

Phone +82-2-3484-6783  
Fax +82-2-3484-6778  
[CCHK-sales@cooperindustries.com](mailto:CCHK-sales@cooperindustries.com)

## Mexico/Latin America/ Caribbean

Phone +52-555-804-4000  
Fax +52-555-804-4020  
[mxmercadotecnia@cooperindustries.com](mailto:mxmercadotecnia@cooperindustries.com)

## Spain

Phone +34-9-37362710  
Fax +34-9-37835055  
[sales.CCH.es@cooperindustries.com](mailto:sales.CCH.es@cooperindustries.com)

## Middle East (Dubai)

Phone +971-4-427-2522 / 2500  
Fax +971-4-429-8521  
[CHMESales@Eaton.com](mailto:CHMESales@Eaton.com)

## The Netherlands

Phone +31-10-2452145  
Fax +31-10-2452121  
[CHRD\\_mail@Eaton.com](mailto:CHRD_mail@Eaton.com)

## Norway

Phone +47-32-244600  
Fax +47-32-244646  
[CHLloffe@eaton.com](mailto:CHLloffe@eaton.com)

## Singapore:

Phone +65-6645-9888  
Fax +65-6297-4819  
[CHSI-Sales@Eaton.com](mailto:CHSI-Sales@Eaton.com)

## Turkey

Phone +90-216-464-20-20  
Fax +90-216-464-20-10  
[infoEGTurkey@eaton.com](mailto:infoEGTurkey@eaton.com)

## Russia

Phone +7-495 510-24-27  
Fax +7-495 510-24-28  
[info@cooper.ru.com](mailto:info@cooper.ru.com)  
[www.cooper-russia.ru](http://www.cooper-russia.ru)

## Eaton's Crouse-Hinds Division

1201 Wolf Street  
Syracuse, NY 13208  
(866) 764-5454  
[CrouseCustomerCTR@Eaton.com](mailto:CrouseCustomerCTR@Eaton.com)

## Eaton

1000 Eaton Boulevard  
Cleveland, OH 44122  
United States  
[Eaton.com](http://Eaton.com)

© 2022 Eaton Corporation  
All Rights Reserved  
Printed in Germany  
Publication No. BR401010EN  
February 2022

Changes to the products, to the information contained in this document, and to prices are reserved; so are errors and omissions. Only order confirmations and technical documentation by Eaton is binding. Photos and pictures also do not warrant a specific layout or functionality. Their use in whatever form is subject to prior approval by Eaton. The same applies to Trademarks (especially Eaton, Moeller, and Cutler-Hammer). The Terms and Conditions of Eaton apply, as referenced on Eaton Internet pages and Eaton order confirmations.

Eaton is a registered trademark.

All other trademarks are property of their respective owners.



Powering Business Worldwide